

snack&food

# Samba Classic



## FEATURES

HEIGHT	1830 mm
WIDTH	890 mm
DEPTH	860 mm
DEPTH WITH SIMPLE REMOVAL OF VEND BIN	793 mm
OVERALL DEPTH WITH DOOR OPEN	1495 mm
WEIGHT	126 kg
POWER SUPPLY VOLTAGE	230 V
POWER SUPPLY FREQUENCY	50 HZ
ABSORBED POWER	470 W

## ENERGY CONSUMPTION

FOR EACH STAND-BY HOUR	212 Wh
EXTERNAL TEMPERATURE	25°

## OPTIONS

5 DIRECT SELECTION BUTTONS
VEND BIN LOCK
LOCKABLE CASH BOX LID
COLOUR VIDEO SCREEN
ELECTRONIC PRICE DISPLAY

## POSSIBLE CONFIGURATIONS

**SAMBA CLASSIC**  
6 TRAYS SNACK  
36 SELECTIONS / 466 PRODUCTS

- snack
- confectionery
- bottles
- cans

10	10	10	10	10	10	10	10
10	10	10	10	10	10	10	10
10	10	10	10	10	10	10	10
15	13	13	13	19	19	15	13
13	13	13	13	13	13	13	13
13	13	13	15	19	15	15	19

**SAMBA CLASSIC COMBI**  
4 TRAYS SNACK AND CONFECTIONERY  
24 SELECTIONS / 304 PRODUCTS  
1 TRAY BOTTLES  
8 SELECTIONS / 48 PRODUCTS  
1 TRAY CANS  
8 SELECTIONS / 48 PRODUCTS

10	10	10	10	10	10	10	10
10	10	10	10	10	10	10	10
15	13	13	13	19	19	15	13
15	13	13	13	19	19	15	13
6	6	6	6	6	6	6	6
6	6	6	6	6	6	6	6

\*option for version with 2 trays of bottles



SAMBA HAS BEEN AWARDED  
WITH THE AUTO VENDING INNOVATION AWARD (2008)  
AS BEST IN "MACHINE INTELLIGENCE"

L326U1

www.nicta-cresenzi.com



N&W GLOBAL VENDING LIMITED  
PO Box 25, Dudley Street, Bilston,  
West Midlands, WV14 0LF  
Tel. +44 (0) 1902 355000  
Fax +44 (0) 1902 402272  
www.nwglobalvending.co.uk  
sales@nwglobalvending.co.uk





**HIGHLY-ADVANCED USER INTERFACE**

- Elegant aluminium door
- Large LCD graphic display, numeric pushbutton and option for 5 direct selection buttons
- Patented directional LED lighting for ease of use
- Possibility to install up to three payment systems
- Arrangement for cashless payment system at a height of 1.300 mm from the ground
- Optional additional colour video screen
- Rolling price displays

**HIGHLY-ADVANCED TECHNOLOGY**

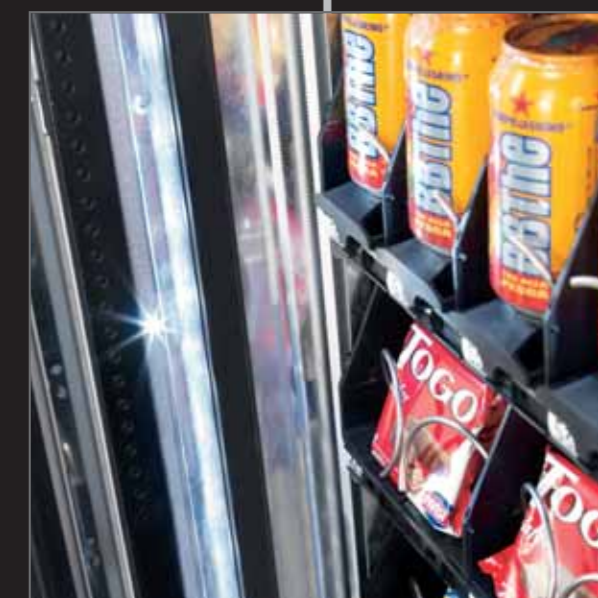
- Optimized product visibility thanks to high tech glass panel
- Guaranteed product delivery thanks to infra red detection system in the dispense compartment

**HIGHLY-ADVANCED ELECTRONICS AND MAINTENANCE**

- New N&W 16 bit electronic platform with a 4 Mega flash memory
- Master/slave connection possible with new Necta machines: Canto and Diesis
- Graphical display with 10 lines of 20 characters
- Transmission and collection of Statistics according to EVA DTS system
- Extended implementation of MDB protocol
- Ease of transport: Samba cabinet passes through 800 mm doors



All snack version



**A new fantastic wide range of choice dances into the market.** From snack only version, or snacks combined with cans and bottles, **Samba Classic** offers maximum flexibility in dispensing thanks to an innovative technology for product distribution and dispensing. The user-friendly interface is designed to be intuitive. The attractive high-impact aesthetics are characterised by an elegant aluminium side panel with a black insert made of bright polycarbonate. The large LED-lit glass front and the new outward opening ergonomic delivery bin complete the image of the vending machine. Ease of maintenance completes the offer of this new Necta vending machine, which is bound to become a well-established point of reference on the market for the years to come. Samba Classic: there is a new rhythm in the Vending sector.

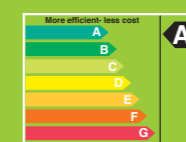
**A+ rated samba classic**

Samba achieves the industry leading A+ Energy rating and exceeds the standard set by the EVA (European Vending Association)

Thanks to its green features, Samba has been awarded with Auto Vending Innovation Award for best in 'Machine Intelligence' (November, 2008).

**ECO friendly features:**

- Energy saving LED lighting
- High performance Eco friendly refrigeration
- Glass panel requires no heating
- 25% more efficient than previous models



N&W lead the way with lean, green production processes. As the first in the vending industry N&W achieved the ISO 14001. We adhere to a stringent Environmental Management System and adopt Life Cycle Assessment for our machines. Thanks to our efforts, N&W has won 'Best Sustainability award' (Avex 2007) and 'Best Sustainable Development & the Environment' (Vending Paris 2008).

